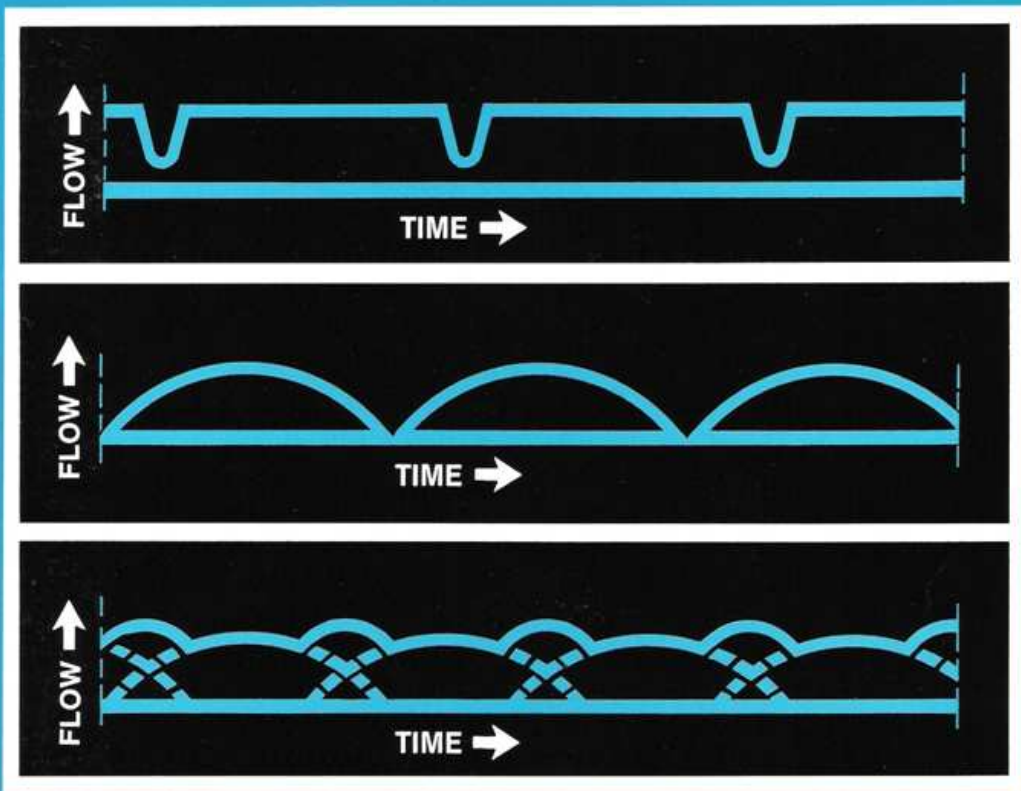


# DORR-OLIVER

POSITIVE DISPLACEMENT PUMPS



## DORR-OLIVER POSITIVE DISPLACEMENT PUMPS

**PLUNGER PUMPS** have an outstanding history of lengthy service in the intermittent pumping of heterogeneous sludges. They are highly resistant to failure because of their rugged construction.

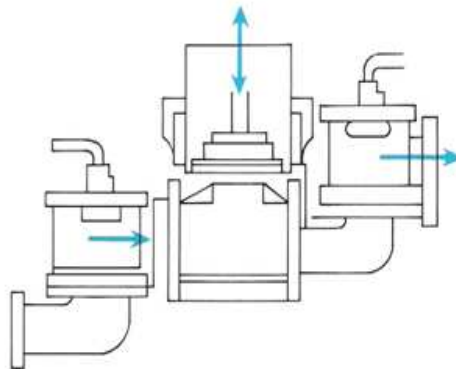
**DIAPHRAGM PUMPS** are applied when heavy density abrasive slurries must be pumped continuously and in large volume.

### SERVICE

Dorr-Oliver Positive Displacement Pumps are used in waste treatment facilities for viscous heterogeneous sludges, in mineral processing plants for transporting heavy slurries and in pulp and paper mills and food and pharmaceutical factories when rotating impellers would not function satisfactorily.

### SOURCE

Dorr-Oliver manufactures pumps to the highest quality standards at its factory in Hazleton, Pennsylvania, U.S.A. Dorr-Oliver has been manufacturing and selling pumps to serve communities and all industries for over forty years and warehouses an extensive supply of parts to provide immediate service.

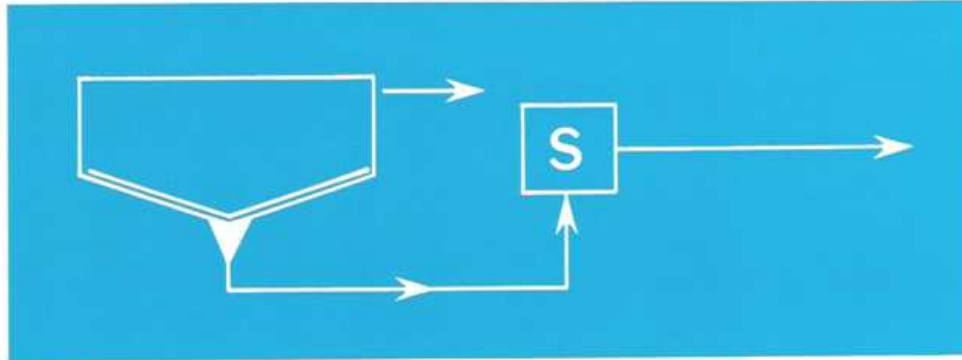


### TYPES OF PUMPS

	<u>Action</u>	<u>Materials</u>	<u>Check Valves</u>	<u>Drive</u>
S	Plunger	Cast Iron	Ball	V-Belt & Gear
VM	Diaphragm	Meehanite	Ball	V-Belt & Gear
W	Diaphragm	Cast Iron	Bayonet	V-Belt & Gear
RM	Diaphragm	Cast Iron	Bayonet	Chain & Gear

The length of the stroke on all of these pumps can be adjusted. The VM and W Pumps may be adjusted while running; their diaphragms being driven by a rocker arm.

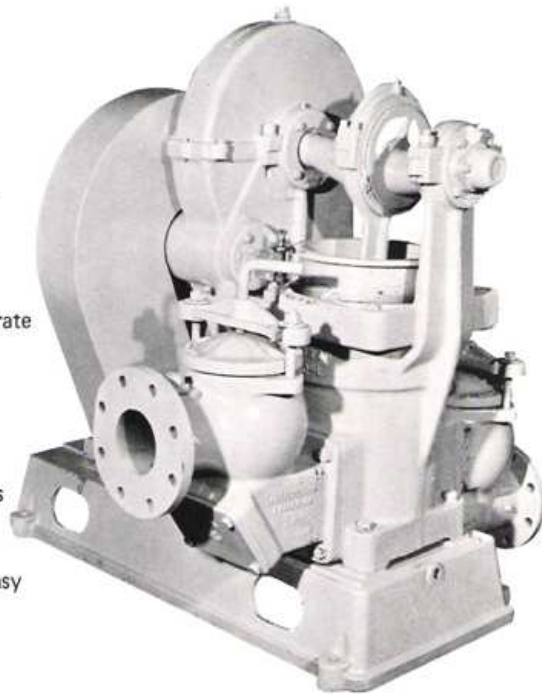
## FOR WATER AND WASTE TREATMENT



## PLUNGER PUMP - TYPE "S"

### FEATURES

- Sloping "kicker plate" prevents segregation of solids.
- Large unobstructed waterways.
- Raised, one-piece cast iron base plate.
- Power transmission integral with pump assuring accurate alignment of gears and pump.
- Deep stuffing box prevents leakage.
- Weighted rubber ball valves are instantly accessible.
- All bearings are replaceable, anti-friction ball bearings fitted for pressure lubrication.
- Adjustable bronze bushed eccentric permits quick, easy stroke variations.

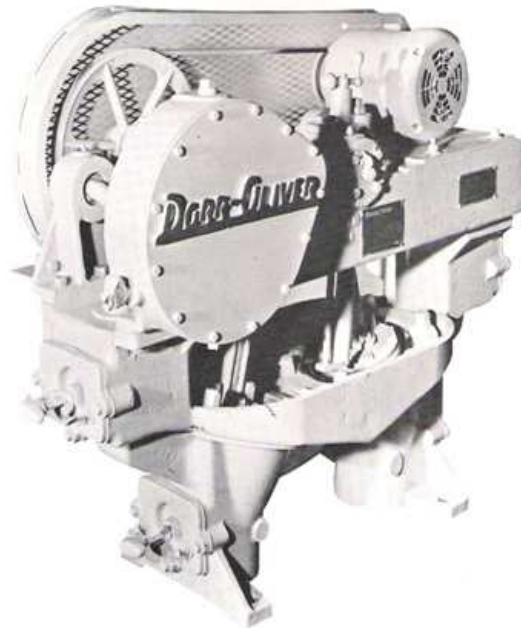


## FOR MINERAL PROCESSING

Iron, cement, copper, coal, zinc, alumina, ores and brines.

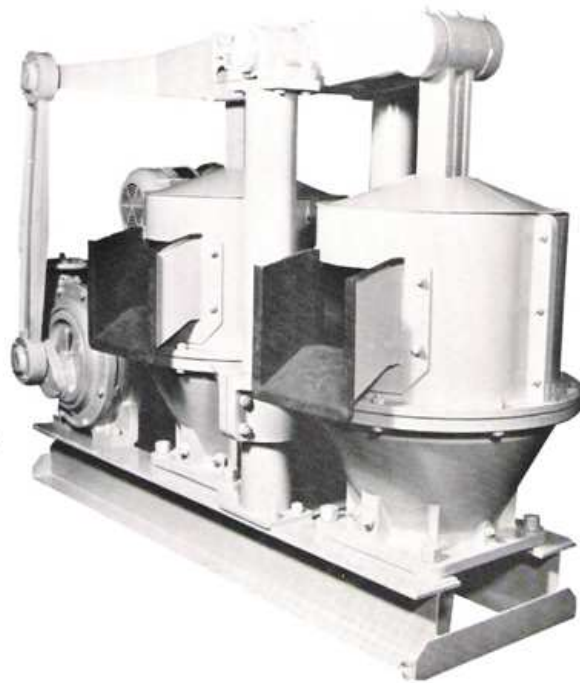
### "VM" FEATURES

- Compact, sturdy, one-piece casting
- Rolling diaphragm action - longest life
- High mechanical efficiency
- No air trapping, no splashing
- Acid-proof construction - rubber lined available
- Standard motor



### "W" FEATURES

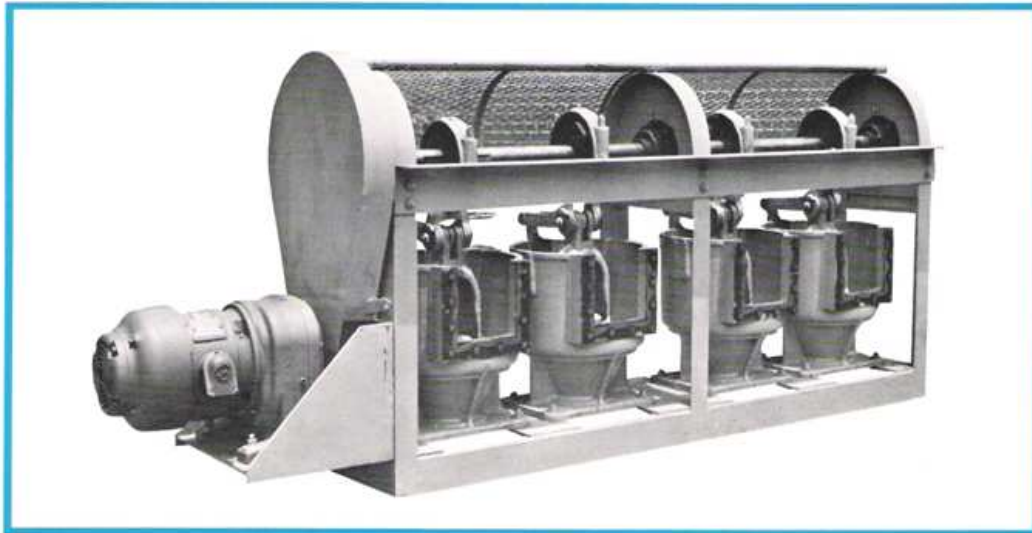
- Highest capacity
- Super-Duty gear box of ductile iron
- Electrically welded structural steel frame
- Bowls of cast iron 20
- Reinforced Neoprene and rubber diaphragms
- Rubber lined construction available



## FOR SUGAR CANE MUDS

### RM FEATURES

- Simple, straightforward design.
- Dependable, low maintenance operation
- Worldwide usage
- Sizes to match clarifiers
- Long service life
- Low cost



MOTOR DRIVEN POSITIVE DISPLACEMENT PUMPS

TYPE & SIZE (SUCTION DIA. INCHES)	5A4	5B4	DRM4	ORM4	VM2	VM4	VM6	W6	W8
MAX. CAPACITY - GPM	75	75	60	120	31	60	220	160-220	400-600
MIN. CAPACITY - GPM	15	15	18	36	9	25	70	40-75	120-200
MAX. DISCH. HEAD - FT. H <sub>2</sub> O	30	50	0	0	0	0	0	0	0
MAX. PRACTICAL TOTAL SUCTION LIFT - FT. H <sub>2</sub> O	14	14	14	14	14	14	14	14	14
MOTOR INPUT H.P.	3	5	3	5	5	15	3	3	7½
NUMBER of STROKES/MIN. (CONSTANT)	50	50	40	40	75	50	40	40	35
MAIN SHAFT INPUT TORQUE INCH-LBS.	3800	6300	4720	7850	420	1890	4726	4725	13500
DISPLACEMENT (GALLONS) AT RECOMMENDED STROKE	1.6	1.6	0.72	0.72	0.34	1.4	3.4	3.4	10.0
STROKE LENGTH ADJUSTMENT	1" - 5"	1" - 5"	1" - 1½"	1" - 1½"	3:1	3:1	3:1	3:1	3:1
SIZE OF BASE - INCHES	24 x 49	24 x 49	20 x 46	20 x 91	12 x 21	19 x 33	25 x 44	21 x 65	26 x 85
HEADROOM	3'8"	3'8"	4'0"	4'10"	2'8"	3'9"	4'11"	4'4"	5'9"
TOTAL WEIGHT - POUNDS	2170	2230	1650	2900	540	1400	3000	2700	5400



**DORR-OLIVER PRODUCTS FOR  
VARIED PROCESSING REQUIREMENTS**

**INCLUDES:**



**CENTRIFUGAL PUMPS:**

Alloy and Lined Types from  
1" - 4" discharge,  
AVS and Split Casings



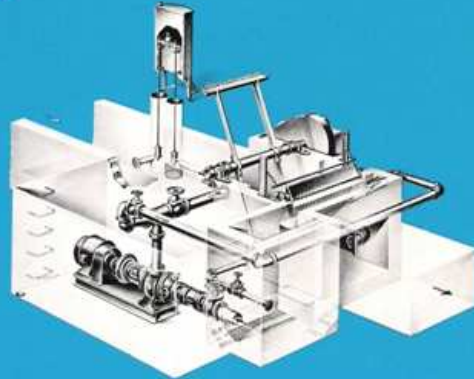
**ODS® PUMPS:**

Air Operated  
Suction and Pressure



**GORATOR®**

Macerating Pump  
Non-Clog Design



**SULZER DISINTEGRATORS:**

Scissors action  
Protects itself

**SALES OFFICES OF DORR-OLIVER INC.**

**REPRESENTED IN CANADA BY:**

**ICR Water Technologies Inc.**  
3-200 Memorial Avenue, Suite 101  
Orillia, Ontario, L3V 5X6  
Phone or Fax to: 888-281-7774

**SEND FOR BULLETINS**

**DORR-OLIVER** 

EXECUTIVE OFFICES